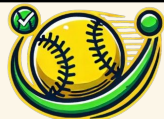


Ethics and Professional Responsibility



PITCH PERFECT

>>>>

sdmay25-49

Slow Pitch Softball Detector Team 2

Cael Schreier, Drew Kinneer, Sam Skaar, Kyle Nachiengane,
Kolby Moorman



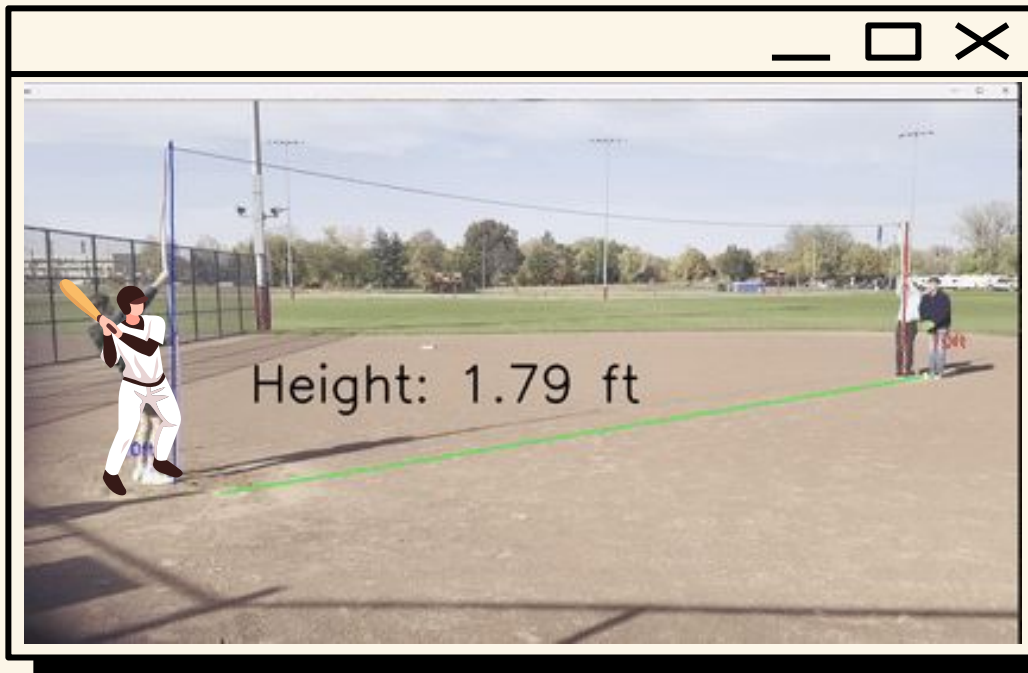
Project Overview



Illegal Pitch Detection

Objectives: >>>>>

- Improve Communication
- Consistent Data
- Enhanced Gameplay
- Minimal Set-Up





Meet the advisors



**Nicholas
Fila**

Advisor, Client,
and softball
expert.



**Phillip
Jones**

Advisor,
Technology
Expert.

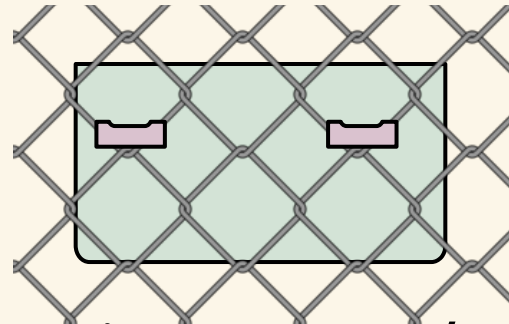
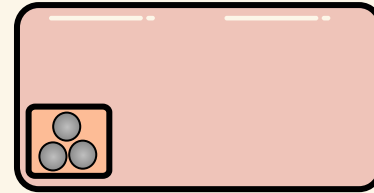
IDEALS - Professional Responsibility



What we do well: Financial Responsibility

- IDEALS: “Deliver products and services of realizable value at reasonable cost.”
- Relevance: Player and League accessibility
- Approach: Minimize external hardware

Your Phone



Mounting Hardware / Tripod

IDEALS - Professional Responsibility



Improvement Needed: **Health, Safety, Well Being**

- IDEALS: “Minimize the Risk, well-being, and safety of stakeholders.
- Relevance: We can always be safer!
- Approach: Tie it down next time, and being cognizant of the people around us.



Four Principles Chart

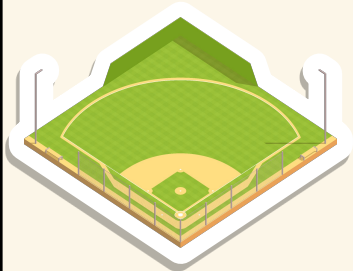


	Beneficence	Nonmaleficence	Respect for Autonomy	Justice
Public health, safety, and welfare	Our project relates to outdoor activities, and can help encourage physical activity among users	We aim to reduce conflict by having our device resolve illegal pitch arguments	Leagues have the choice of how much they wish to use our project	Our project is unbiased to different teams and leagues, it will be consistent throughout every game
Global, cultural, and social	Our project design is made to be easily accessible by many users.	We hope our product can prevent disputes and conflicts in the game.	Teams have a choice to rely on an umpire or use our project	Calls are consistent across teams and leagues
Environmental	Our product does not affect the environment.	Our project does not cause extra carbon emissions	N/A	N/A
Economic	N/A	Our project will run on a phone and require minimal hardware purchases	Only one device is needed, so players/leagues have the choice of who provides the device	Only one team having the device can still allow both teams to use it during a game

Public Health, Safety, and Welfare



Beneficence



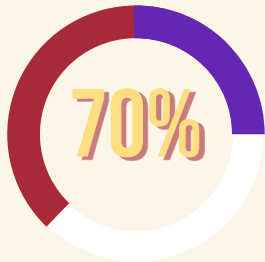
Outdoors & Physical
Activity

Nonmaleficence

Reduce Conflict &
Resolve Arguments



Respect for Autonomy



Governing Bodies
choose implementation

Justice

Unbiased, Consistent,
and Repeatable



Potential Ethical



Issues

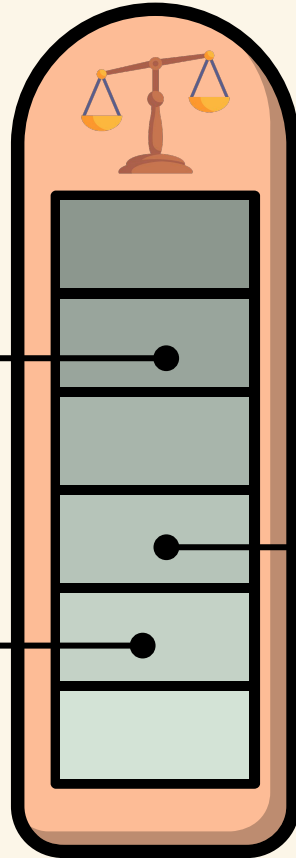
.....



Umpire Jobs

**Extra League
Costs**

**Human
Element of
Sports**





Fairness



....

>>>>

Pitchers



Umpires



Batters



Thank You!



PITCH PERFECT



"When Every Pitch Matters, Trust Pitch Perfect."

